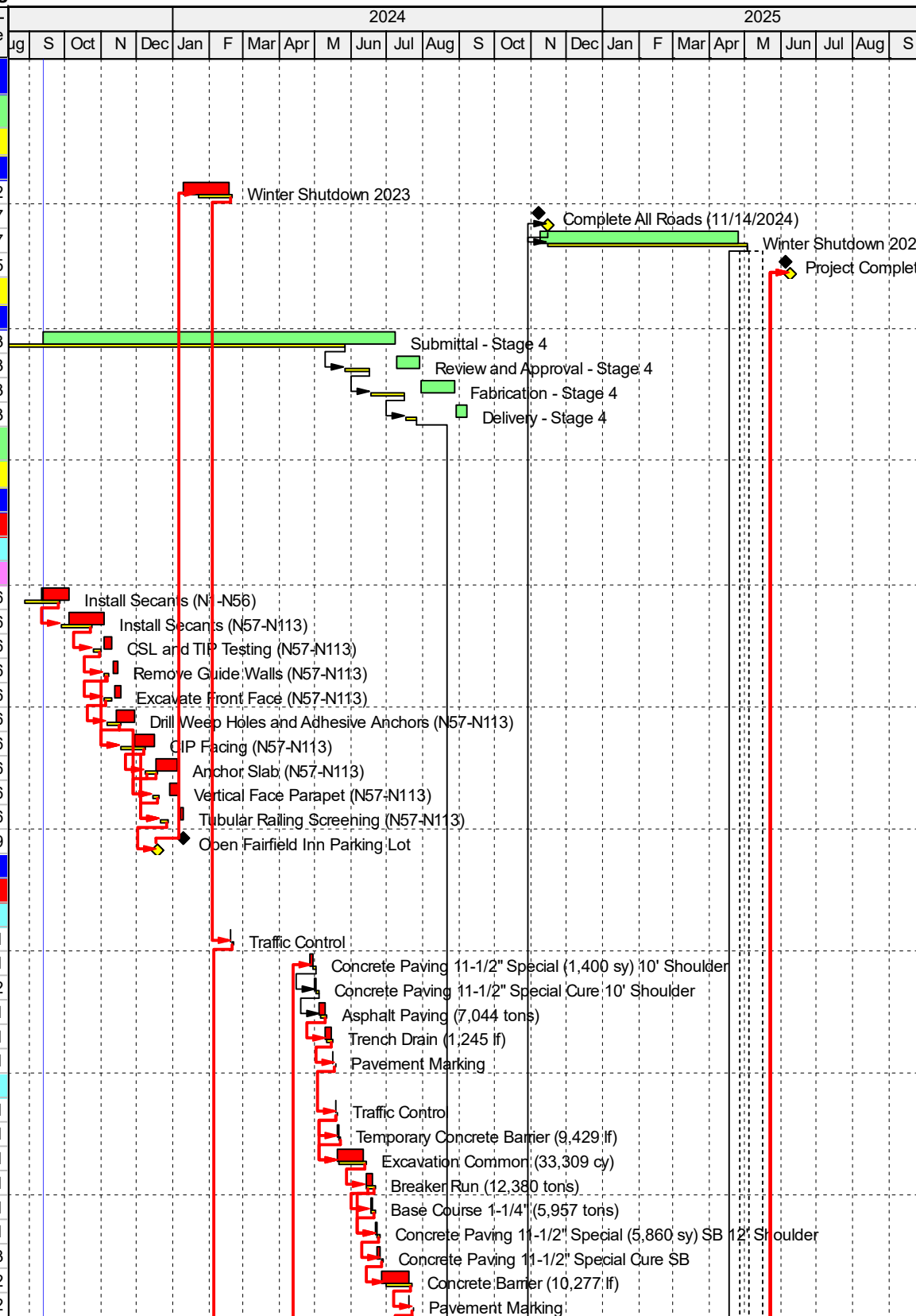


Activity ID	Activity Name	OD	RD	Start	Finish	Total Float	Previous Update Start	Previous Update Finish	Variance - Finish Date
Glendale IH 43 UD-04 Sep 1, 2023									
1229-04-71 I-43 N-S - N Port Washington Rd									
Administration									
Project Milestones									
A1165	Winter Shutdown 2023	40	40	10-Jan-24	18-Feb-24	0	23-Jan-24	20-Feb-24	2
A1200	Complete All Roads (11/14/2024)	0	0		07-Nov-24*	1		14-Nov-24	7
A1205	Winter Shutdown 2024	170	170	08-Nov-24	26-Apr-25	1	15-Nov-24	03-May-25	7
A1210	Project Completion (6/30/2025)	0	0		04-Jun-25*	0		09-Jun-25	5
Procurement									
Storm Sewer Submittal									
SBMT1760	Submittal - Stage 4	300	300	13-Sep-23	08-Jul-24	1	01-Aug-23	26-May-24	-43
SBMT1770	Review and Approval - Stage 4	21	21	09-Jul-24	29-Jul-24	1	27-May-24	16-Jun-24	-43
SBMT1780	Fabrication - Stage 4	30	30	30-Jul-24	28-Aug-24	1	17-Jun-24	16-Jul-24	-43
SBMT1790	Delivery - Stage 4	10	10	29-Aug-24	07-Sep-24	1	17-Jul-24	26-Jul-24	-43
1229-04-73 I-43 N-S - South End									
Construction									
Stage 2 Construction									
Retaining Walls									
R-40-641									
Unit 2 Secant Piles and CIP Facing									
R641-1150	Install Secants (N1-N56)	20	16	12-Sep-23 A	04-Oct-23	-11	28-Aug-23	27-Sep-23	-6
R641-1155	Install Secants (N57-N113)	20	20	05-Oct-23	03-Nov-23	0	28-Sep-23	24-Oct-23	-6
R641-1165	CSL and TIP Testing (N57-N113)	5	5	04-Nov-23	10-Nov-23	0	25-Oct-23	01-Nov-23	-6
R641-1175	Remove Guide Walls (N57-N113)	4	4	11-Nov-23	15-Nov-23	0	03-Nov-23	07-Nov-23	-6
R641-1185	Excavate Front Face (N57-N113)	5	5	13-Nov-23	17-Nov-23	0	04-Nov-23	10-Nov-23	-6
R641-1195	Drill Weep Holes and Adhesive Anchors (N57-N113)	10	10	14-Nov-23	29-Nov-23	0	06-Nov-23	17-Nov-23	-6
R641-1205	CIP Facing (N57-N113)	13	13	30-Nov-23	16-Dec-23	0	18-Nov-23	08-Dec-23	-6
R641-1215	Anchor Slab (N57-N113)	7	7	18-Dec-23	04-Jan-24	0	09-Dec-23	18-Dec-23	-6
R641-1225	Vertical Face Parapet (N57-N113)	4	4	29-Dec-23	06-Jan-24	0	15-Dec-23	20-Dec-23	-6
R641-1231	Tubular Railing Screening (N57-N113)	2	2	08-Jan-24	09-Jan-24	0	21-Dec-23	28-Dec-23	-6
R641-1480	Open Fairfield Inn Parking Lot	0	0		09-Jan-24	0		18-Dec-23	-9
Stage 3 Construction									
Roadwork									
Stage 3A IH 43 Median and NB									
43S3A-1000	Traffic Control	1	1	19-Feb-24	19-Feb-24	0	21-Feb-24	21-Feb-24	1
43S3A-1260	Concrete Paving 11-1/2" Special (1,400 sy) 10' Shoulder	2	2	27-Apr-24	29-Apr-24	0	29-Apr-24	01-May-24	1
43S3A-1270	Concrete Paving 11-1/2" Special Cure 10' Shoulder	3	3	30-Apr-24	02-May-24	1	02-May-24	04-May-24	2
43S3A-1360	Asphalt Paving (7,044 tons)	4	4	04-May-24	09-May-24	0	06-May-24	10-May-24	1
43S3A-1380	Trench Drain (1,245 lf)	4	4	10-May-24	15-May-24	0	11-May-24	16-May-24	1
43S3A-1410	Pavement Marking	1	1	16-May-24	16-May-24	0	18-May-24	18-May-24	1
Stage 3B IH 43 Median Bender to sta 1185									
43S3B-1000	Traffic Control	1	1	18-May-24	18-May-24	0	20-May-24	20-May-24	1
43S3B-1010	Temporary Concrete Barrier (9,429 lf)	2	2	20-May-24	21-May-24	0	21-May-24	22-May-24	1
43S3B-1020	Excavation Common (33,309 cy)	16	16	20-May-24	11-Jun-24	0	21-May-24	13-Jun-24	1
43S3B-1060	Breaker Run (12,380 tons)	6	6	13-Jun-24	19-Jun-24	0	14-Jun-24	21-Jun-24	1
43S3B-1070	Base Course 1-1/4" (5,957 tons)	3	3	17-Jun-24	19-Jun-24	0	18-Jun-24	21-Jun-24	1
43S3B-1080	Concrete Paving 11-1/2" Special (5,860 sy) SB 12' Shoul	2	2	21-Jun-24	22-Jun-24	0	22-Jun-24	25-Jun-24	1
43S3B-1090	Concrete Paving 11-1/2" Special Cure SB	3	3	23-Jun-24	25-Jun-24	0	26-Jun-24	28-Jun-24	3
43S3B-1140	Concrete Barrier (10,277 lf)	14	14	26-Jun-24	19-Jul-24	0	01-Jul-24	22-Jul-24	2
43S3B-1150	Pavement Marking	1	1	20-Jul-24	20-Jul-24	0	24-Jul-24	24-Jul-24	2



Activity ID	Activity Name	OD	RD	Start	Finish	Total Float	Previous Update Start	Previous Update Finish	Variance - Finish Date	2024												2025					
										Jug	S	Oct	N	Dec	Jan	F	Mar	Apr	M	Jun	Jul	Aug	S	Oct	N	Dec	Jan
Retaining Walls																											
R-40-637 3A																											
R637-1100	Removal Structure R-40-158	8	8	21-Feb-24	01-Mar-24	0	22-Feb-24	02-Mar-24	1	Removal Structure R-40-158																	
R637-1110	Excavate for Footing	2	2	02-Mar-24	04-Mar-24	0	04-Mar-24	06-Mar-24	1	Excavate for Footing																	
R637-1120	Form and Pour Footing (705 lf)	2	2	06-Mar-24	08-Mar-24	0	08-Mar-24	09-Mar-24	1	Form and Pour Footing (705 lf)																	
R637-1130	Set Panels and Backfill (7,541 sf)	19	19	09-Mar-24	04-Apr-24	0	11-Mar-24	06-Apr-24	1	Set Panels and Backfill (7,541 sf)																	
R637-1160	Anchor Slab	19	19	01-Apr-24	25-Apr-24	0	02-Apr-24	27-Apr-24	1	Anchor Slab																	
Stage 4 Construction																											
Roadwork																											
Stage 4A																											
Stage 4A Bender to sta 1185																											
43S4A-1000	Traffic Control	1	1	22-Jul-24	22-Jul-24	0	25-Jul-24	25-Jul-24	2	Traffic Control																	
43S4A-1010	Temporary Concrete Barrier (18,619 lf)	4	4	22-Jul-24	26-Jul-24	0	25-Jul-24	29-Jul-24	2	Temporary Concrete Barrier (18,619 lf)																	
43S4A-1015	Anchor Temporary Concrete Barrier (18,619 lf)	4	4	22-Jul-24	26-Jul-24	0	25-Jul-24	29-Jul-24	2	Anchor Temporary Concrete Barrier (18,619 lf)																	
43S4A-1020	Remvoing Concrete Pavement (36,989 sy)	10	10	27-Jul-24	09-Aug-24	0	30-Jul-24	12-Aug-24	2	Remvoing Concrete Pavement (36,989 sy)																	
43S4A-1040	Excavation Common (37,580 cy) sta 1079 to 1132	19	19	01-Aug-24	24-Aug-24	0	03-Aug-24	27-Aug-24	2	Excavation Common (37,580 cy) sta 1079 to 1132																	
43S4A-1050	Excavation Common (37,580 cy) sta 1132 to 1185	19	19	26-Aug-24	24-Sep-24	0	29-Aug-24	27-Sep-24	2	Excavation Common (37,580 cy) sta 1132 to 1185																	
43S4A-1090	Storm Sewer (2,970 lf)	8	8	09-Sep-24	18-Sep-24	0	07-Sep-24	17-Sep-24	-1	Storm Sewer (2,970 lf)																	
43S4A-1080	Breaker Run (24,073 tons) sta 1132 to 1185	12	12	13-Sep-24	28-Sep-24	0	16-Sep-24	01-Oct-24	2	Breaker Run (24,073 tons) sta 1132 to 1185																	
43S4A-1110	Base Course 1-1/4" (21,190 tons)	11	11	20-Sep-24	04-Oct-24	0	23-Sep-24	07-Oct-24	2	Base Course 1-1/4" (21,190 tons)																	
43S4A-1120	Concrete Paving 11-1/2" Special (30,452 sy) Pass 1	3	3	05-Oct-24	08-Oct-24	0	08-Oct-24	11-Oct-24	2	Concrete Paving 11-1/2" Special (30,452 sy) Pass 1																	
43S4A-1130	Concrete Paving 11-1/2" Special Cure Pass 1	3	3	09-Oct-24	11-Oct-24	0	12-Oct-24	14-Oct-24	3	Concrete Paving 11-1/2" Special Cure Pass 1																	
43S4A-1140	Concrete Paving 11-1/2" Special (15,226 sy) Pass 2	2	2	12-Oct-24	14-Oct-24	0	16-Oct-24	17-Oct-24	2	Concrete Paving 11-1/2" Special (15,226 sy) Pass 2																	
43S4A-1150	Concrete Paving 11-1/2" Special Cure Pass 2	3	3	15-Oct-24	17-Oct-24	1	18-Oct-24	20-Oct-24	3	Concrete Paving 11-1/2" Special Cure Pass 2																	
43S4A-1160	Concrete Paving 11-1/2" Special (12,226 sy) 10' Shoulde	2	2	18-Oct-24	19-Oct-24	2	21-Oct-24	22-Oct-24	2	Concrete Paving 11-1/2" Special (12,226 sy) 10' Shoulde																	
43S4A-1220	Concrete Barrier (10,430 lf)	14	14	18-Oct-24	05-Nov-24	1	21-Oct-24	08-Nov-24	2	Concrete Barrier (10,430 lf)																	
43S4A-1170	Concrete Paving 11-1/2" Special Cure 10' Shoulder	3	3	20-Oct-24	22-Oct-24	3	23-Oct-24	25-Oct-24	3	Concrete Paving 11-1/2" Special Cure 10' Shoulder																	
43S4A-1230	Pavement Marking	1	1	07-Nov-24	07-Nov-24	1	09-Nov-24	09-Nov-24	2	Pavement Marking																	
Retaining Walls																											
R-40-640																											
R640-1000	Excavate for Footing	1	1	24-Jul-24	24-Jul-24	0	26-Jul-24	26-Jul-24	2	Excavate for Footing																	
R640-1010	Form and Pour Footing (1,575 lf)	2	2	25-Jul-24	26-Jul-24	0	27-Jul-24	29-Jul-24	2	Form and Pour Footing (1,575 lf)																	
R640-1020	Set Panels and Backfill (9,725 sf) First	20	20	27-Jul-24	22-Aug-24	0	30-Jul-24	24-Aug-24	2	Set Panels and Backfill (9,725 sf) First																	
R640-1030	Set Panels and Backfill (9,725 sf) Second	20	20	23-Aug-24	23-Sep-24	0	26-Aug-24	26-Sep-24	2	Set Panels and Backfill (9,725 sf) Second																	
R640-1050	Anchor Slab Second	18	18	10-Sep-24	04-Oct-24	0	13-Sep-24	07-Oct-24	2	Anchor Slab Second																	
Sign Structure																											
S-40-3035 4B																											
S3035-1000	Drill/Form Foundation	2	2	24-Oct-24	25-Oct-24	2	26-Oct-24	28-Oct-24	2	Drill/Form Foundation																	
S3035-1010	Pour Foundation	2	2	26-Oct-24	28-Oct-24	2	29-Oct-24	30-Oct-24	2	Pour Foundation																	
S3035-1020	Cure Foundation	7	7	29-Oct-24	04-Nov-24	2	31-Oct-24	06-Nov-24	2	Cure Foundation																	
S3035-1030	Set Truss	1	1	05-Nov-24	05-Nov-24	1	07-Nov-24	07-Nov-24	1	Set Truss																	
S-40-3047 4A																											
S3047-1000	Drill/Form Foundation	2	2	24-Oct-24	25-Oct-24	2	26-Oct-24	28-Oct-24	2	Drill/Form Foundation																	
S3047-1010	Pour Foundation	2	2	26-Oct-24	28-Oct-24	2	29-Oct-24	30-Oct-24	2	Pour Foundation																	
S3047-1020	Cure Foundation	7	7	29-Oct-24	04-Nov-24	2	31-Oct-24	06-Nov-24	2	Cure Foundation																	
S3047-1030	Set Truss	1	1	05-Nov-24	05-Nov-24	1	07-Nov-24	07-Nov-24	1	Set Truss																	
Stage 5 Construction																											
Bridge Structures																											
B-40-1026 Overlay																											
B1026OL-1000	Traffic Control	1	1	28-Apr-25	28-Apr-25	0	05-May-25	05-May-25	4	Traffic Control																	
B1026OL-1010	Polymer Overlay First Half	2	2	29-Apr-25	02-May-25	0	06-May-25	08-May-25	4	Polymer Overlay First																	

